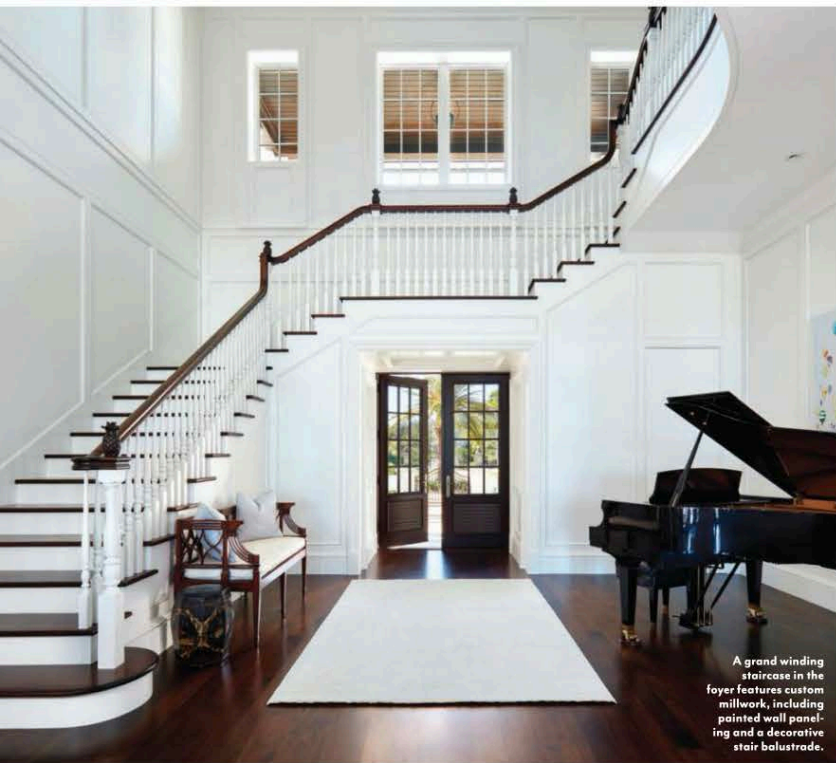


# River Retreat

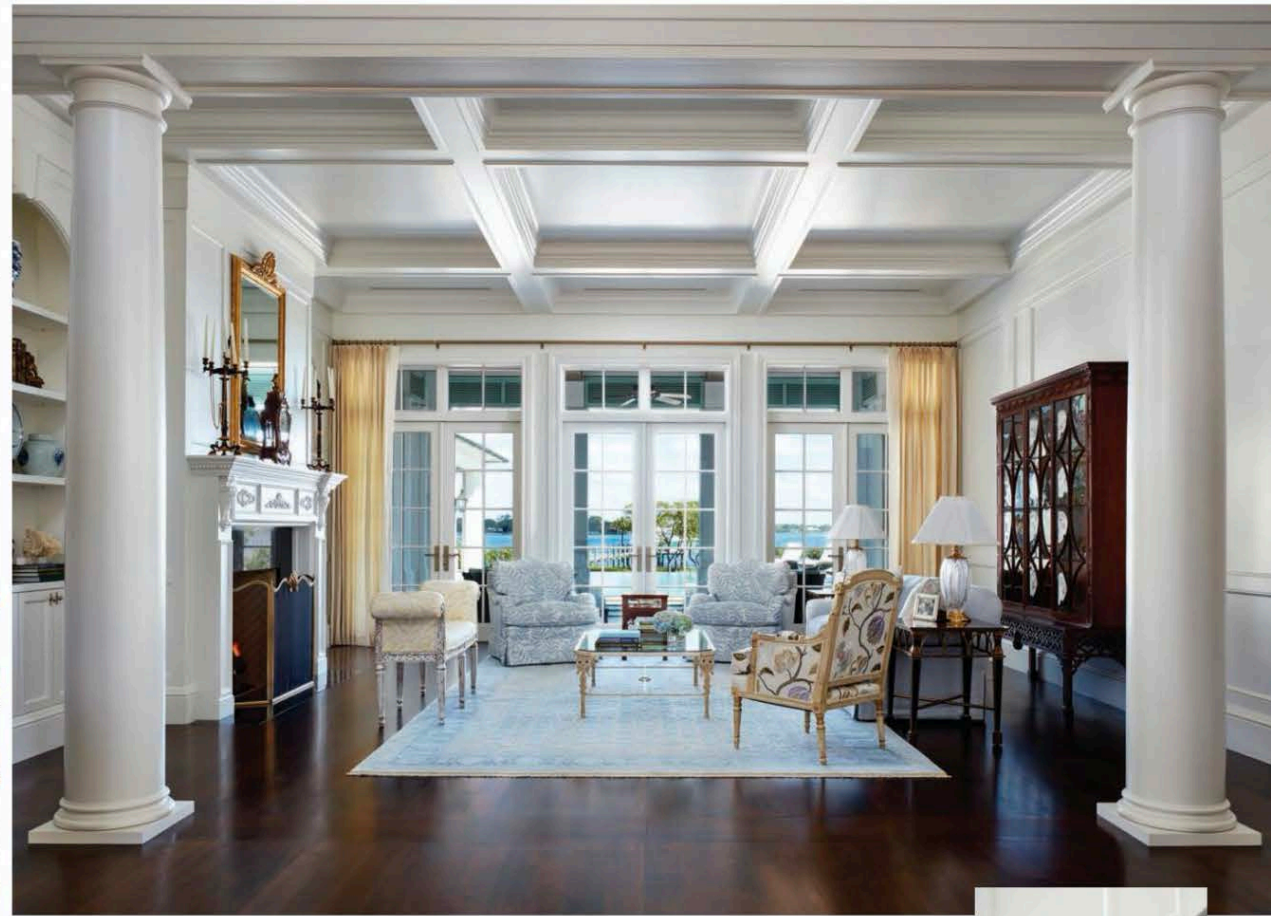
A Jupiter couple's new residence on the Loxahatchee River graciously blends contemporary living with classic style

by JEAN NAYAR | photography by BRANTLEY PHOTOGRAPHY



A grand winding staircase in the foyer features custom millwork, including painted wall paneling and a decorative stair balustrade.

When Jacquelyn Armour, principal of JMA Interior Design, was contacted by the owners about their plantation-style home on the Loxahatchee River in Jupiter, she was delighted at the rare opportunity to shape its interiors before the residence was fully designed and constructed. The couple, empty nesters who had long lived in the area, wanted Armour to work hand-in-hand with the architect and builder from the ground up—not only selecting the materials, fixtures, finishes, and furniture for the interior spaces, but also influencing the spatial configuration of the rooms and how they would flow from one to the other. “It’s great to be able to work with the architect and builder on a home from the very beginning,” Armour says. “It allows you to more fully address both the functional and aesthetic needs of the client.”



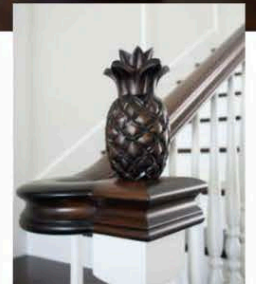
From top: “The fernlike fabric on the armchairs served as a jumping-off point for the palette of other elements in the living room,” Armour says; a decorative pineapple finial adorns the base of the grand staircase.

The clients, who already owned an oceanfront condo nearby, decided they wanted a larger, single-family home to more fully accommodate their lifestyle, which often includes entertaining friends and hosting family. They worked with Tequesta-based Mitch Miller of Village Architects, along with Armour, on the design and interior elevations before Jupiter-based Dan Reedy of Onshore Construction went to work building the 20,000-square-foot home of their dreams.

From a functional perspective, the space had to work for the couple’s adult children and young grandchildren who frequently stay with the owners. “The bedrooms and guest areas had to be well thought through, so people of different generations

would be comfortable under one roof,” Armour says. “They wanted a variety of spaces—both formal and casual—for different types of entertaining, and they asked that as many rooms as possible be oriented toward the spectacular river views, with plenty of options for outdoor entertaining as well.”

Aesthetically, the clients had very clear ideas about the ambience they were hoping to establish. “The wife desired a British





The beachy family room has retractable walls that support an indoor-outdoor lifestyle. Opposite page from top: the home sits on the Loxahatchee River; soft blues in the kitchen

to introduce a more contemporary feel and bring the outside in," she adds. Lastly, they wanted to avoid replicating the look of their condo, which Armour says has "a darker color palette." At the new home, Armour opted for a lighter palette, "painting much of the millwork white and drawing from the soft blues and greens outdoors."

The result is a sense of relaxed formality that begins in the living room. Framed by a pair of classic Doric columns and crowned with a coffered ceiling, the space is fitted with a mix of antique furnishings—including a reupholstered Bergère chair and a Swedish-style bench—along with new pieces atop a walnut wood floor. The soft hues of the fabrics "pull colors from outdoors into the house in a subtle way," says Armour.

colonial-style atmosphere with lots of custom woodwork," says the designer. The couple, who Armour says favors traditional and antique furniture, also hoped to integrate several pieces from their existing collection into the new home. "But they also hoped

A Persian rug adds to the elegance of the space and ties the room together.

In contrast to the more formal sophistication of the living room, the large family room facing the pool brims with a casual, beachy feeling that not only makes it an inviting family-friendly gathering space but also eases the transition between indoors and out. Beneath a vaulted ceiling supported by cypress trusses, a pair of white contemporary sofas covered with durable Crypton fabric are coupled with updated pale blue reclining wing chairs from Baker, which comfortably accommodate grandkids and dogs. Fringed throw pillows contribute to the classic blue and white waterside color scheme. Armour also collaborated with the architect and builder to surround the room with doors that pocket into the walls, enabling a clear view of the pool and supporting an indoor-outdoor lifestyle as well as a sense of connection to the summer kitchen and covered outdoor dining area nearby.

Armour carried the beach vibe into the kitchen, where she deployed a variation on the water-inspired palette: barstools covered in a soft blue fabric from Kravet; a creamy marble-like quartzite for the countertops. An

antique French zinc range hood injects a touch of elegance. In the adjoining breakfast area, ocean blue Lexington chairs and a custom-colored buffet align with the palette of the kitchen.

The second story of the home, accessed by a grand winding staircase, houses three guest bedrooms, five baths (three others are on the first floor), and the master suite. Drenched in a soothing variation of the color scheme and anchored with an antique four-poster bed, the master is an oasis of calm. The room's comfortable seating area overlooks the massive river beyond the French doors leading to a terrace. In the baths, the owners





and Armour opted to add touches of whimsy with colorful and boldly patterned wallpaper and character-rich vanities. A pair of his and hers dens—private comfort zones for husband and wife—round out the collection of private spaces.

Working together with the architect, Armour was able to achieve a cohesiveness among the various spaces that makes the home a truly inviting family compound. “It’s an updated, open approach to a traditional British colonial-style home,” she says. “And by being involved early on in the process, we were able to help really shape the interiors, which has a big impact on the overall finished product.” ♦

*Above: Armour selected colorful, patterned wallpaper for all of the baths. Right: the master suite offers stunning views.*

#### DESIGN DETAILS

Designer: Jackie Armour, JMA Interior Design ([jma-ids.com](http://jma-ids.com))  
 Architect: Mitch Miller, Village Architects ([village-architects.com](http://village-architects.com))  
 Builder: Dan Reedy, Onshore Construction ([onshorejupiter.com](http://onshorejupiter.com))  
 Millwork: Palm City Millwork ([palmcitymillwork.com](http://palmcitymillwork.com))  
 Wood Flooring, Stair Treads & Risers: Absolute Hardware Flooring ([absolutehardwareflooring.com](http://absolutehardwareflooring.com))  
 Staircase Railing & Bannisters: Stuart Stair & Furniture ([stuartstair.com](http://stuartstair.com))  
 Landscape Architect: Parker-Yanette Design Group ([pydg.com](http://pydg.com))  
 Pool: AAA Custom Pools ([aaacustompools.com](http://aaacustompools.com))



66 *It's an updated, open approach to a traditional British colonial-style home.*

— JACQUELYN ARMOUR